

Ugao Božidara Adžije i Zlatarićeve stambeni objekat

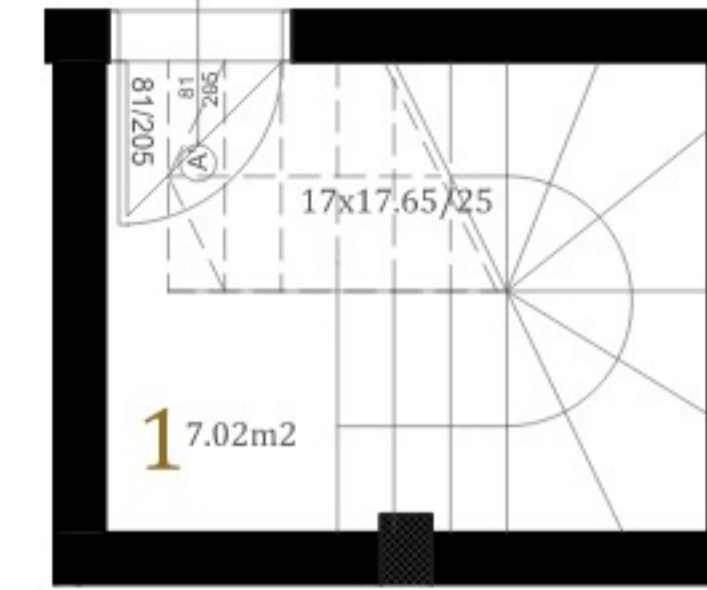
parcela broj 1636/1 K.O. Petrovaradin

62 Pk+Dx/At+Dx trosoban/3

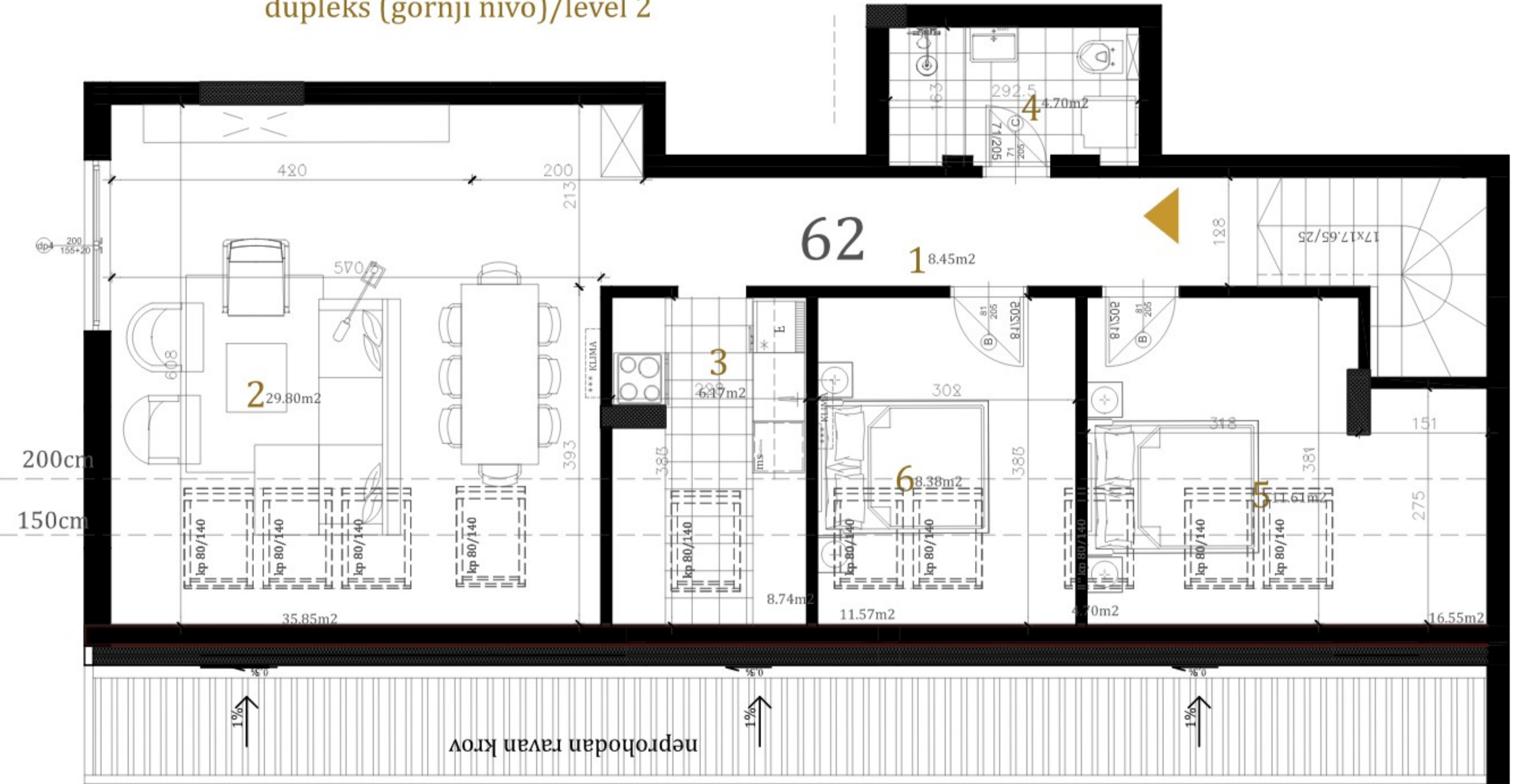
Stan br./Unit No. Sprat/Floor No. broj soba/number of rooms

br/noprostorija/room	Pov. poda/ floor Area (m ²)	red. pov./ red. Area (m ²)
donji nivo/ level one		
1 ulaz+ stepeniste (pk) +entrance stairs	7.02	
ukupno površina gornji nivo/total floor area level 1:		7.02
gornji nivo/level two		
1 ulaz/entrance	9,01	8.45
2 dn.boravak+trpezarija/ room+dining room	35.85	29.80
3 kuhinja / kitchen	8.74	6.17
4 kupatilo/bathroom	4.70	4.70
5 soba/bedroom	16.55	11.61
6 soba/bedroom	11.57	8.38
ukupno površina gornji nivo/total floor area level 2:		69.11
donji nivo/level one		7.02
gornji nivo/level two		69.11
ukupno površina /total floor area:		76.13
umanjena površina/ reduced area:		73.85

62 potkrovlje (donji nivo)/level 1



dupleks (gornji nivo)/level 2

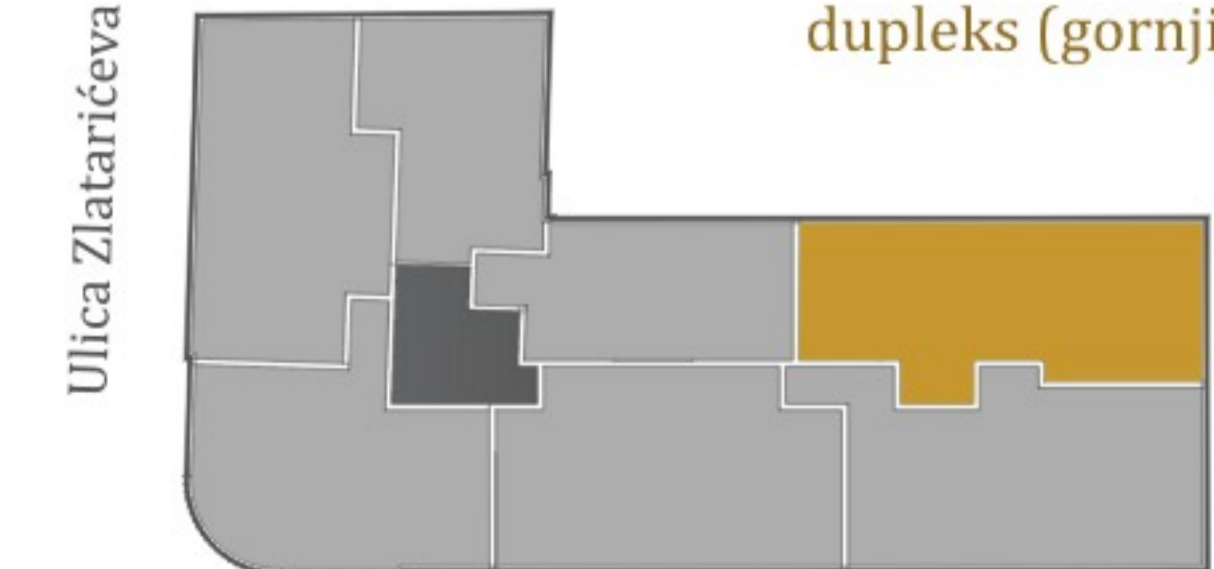


Ulica Zlatarićeve potkrovlje (donji nivo)/level 1



Ulica Božidara Adžije

Ulica Zlatarićeve dupleks (gornji nivo)/level 2



Ulica Božidara Adžije

KORDUN GRADNJA DOO, Glavna 133/4, Ruma

NAPOMENA: Sve dimenzije, materijali i okviri su približni. Računanje površina spoljašnjeg i unutrašnjeg prostora urađeno je po važećem standardu SRPS U.C2.1000:2002 i predstavlja neto površinu stambene površina su uobičajena pri izradi projekatnih izdava.
DISCLAIMER: All dimensions, drawings and materials are approximate. The calculation of the surfaces of the exterior and interior space was done according to the valid standard SRPS U.C2.1000 residential unit. Deviations from the shown surfaces are a common occurrence in the profession during the design and construction phases.