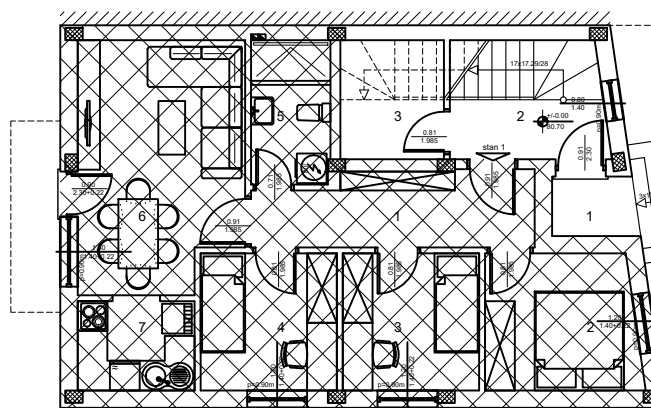




OSNOVA PRIZEMLJA / položaj stana u zgradi



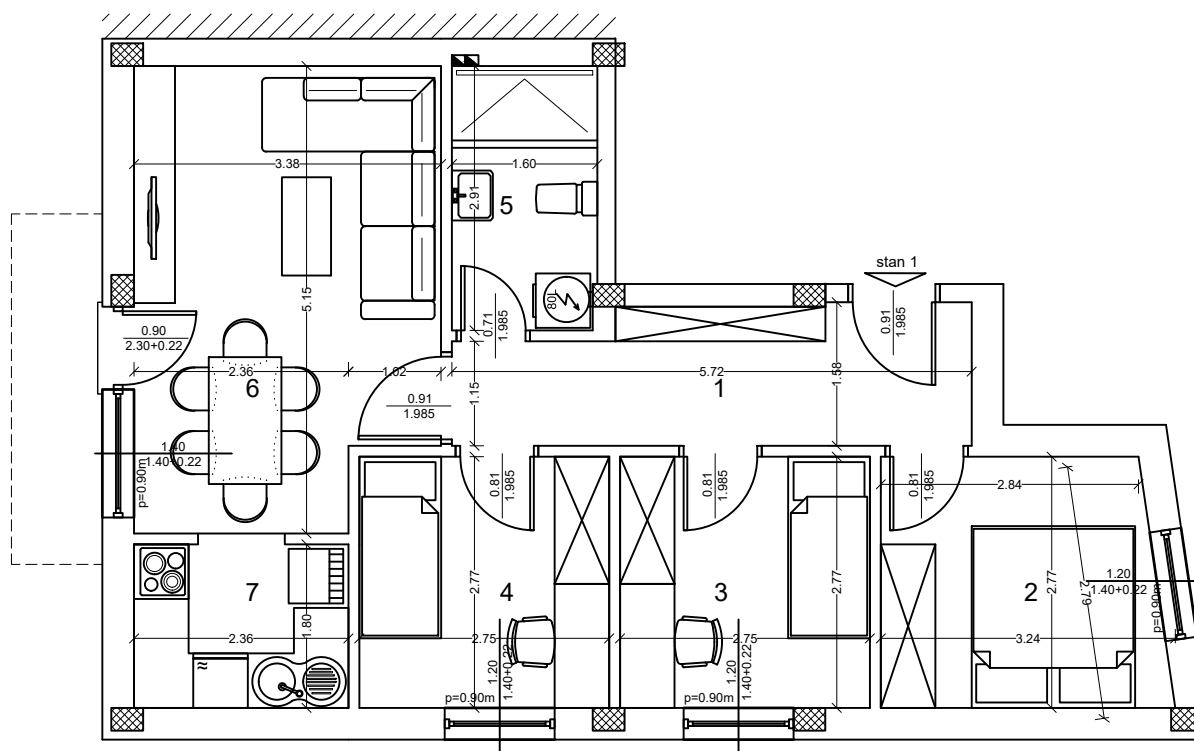
Ulica



KORDUN GRADNJA

STAMBENI OBJEKAT P+1+Pk
 Ulica Slavka Rodića bb, Novi Sad
 K.P. 3835/13, K.O. Veternik

OSNOVA STANA BR. 1, P=55,35 m²

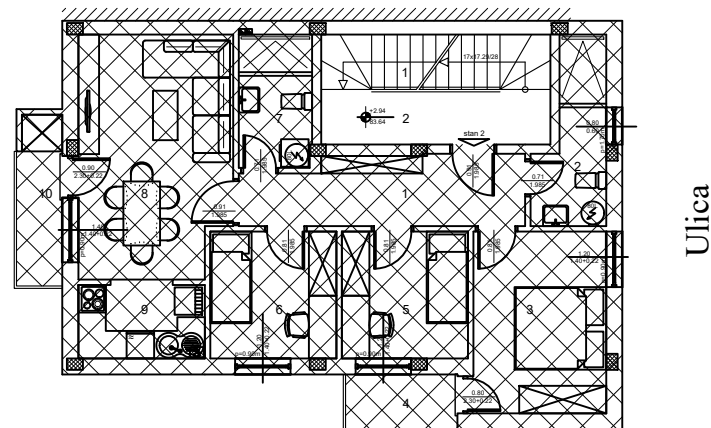


PRIZEMLJE - STAN 1

BR.	NAZIV PROSTORIJE:	P [m ²]
1.	Ulaz	7,91
2.	Spavaća soba	8,16
3.	Spavaća soba	7,38
4.	Spavaća soba	7,38
5.	Kupatilo	4,49
6.	Dnevna soba i trpezarija	15,91
7.	Kuhinja	4,12
	UKUPNO:	55,35



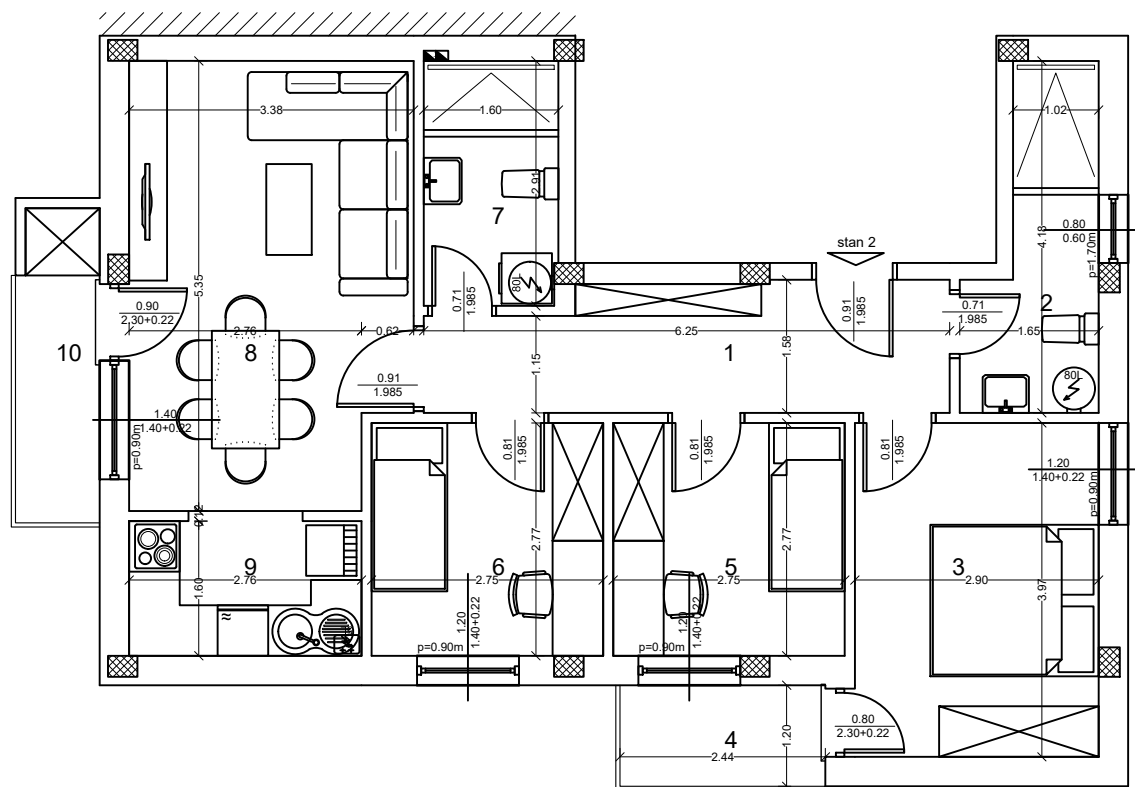
OSNOVA 1. SPRATA / položaj stana u zgradi



KORDUN GRADNJA

STAMBENI OBJEKAT P+1+Pk
 Ulica Slavka Rodića bb, Novi Sad
 K.P. 3835/13, K.O. Veternik

OSNOVA STANA BR. 2, P=71,67 m²

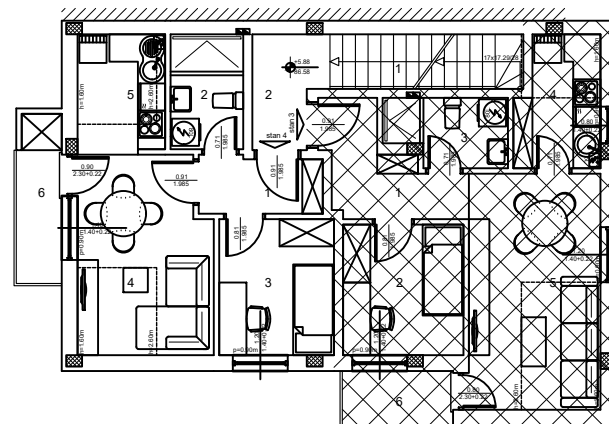


1. SPRAT- STAN 2

BR.	NAZIV PROSTORIJE:	P [m ²]
1.	Ulaz	8,72
2.	Toalet	5,09
3.	Spavaća soba	11,14
4.	Balkon	2,84
5.	Spavaća soba	7,38
6.	Spavaća soba	7,38
7.	Kupatilo	4,49
8.	Dnevna soba i trpezarija	16,82
9.	Kuhinja	4,28
10.	Balkon	3,53
	UKUPNO:	71,67



OSNOVA POTKROVLJA / položaj stana u zgradi

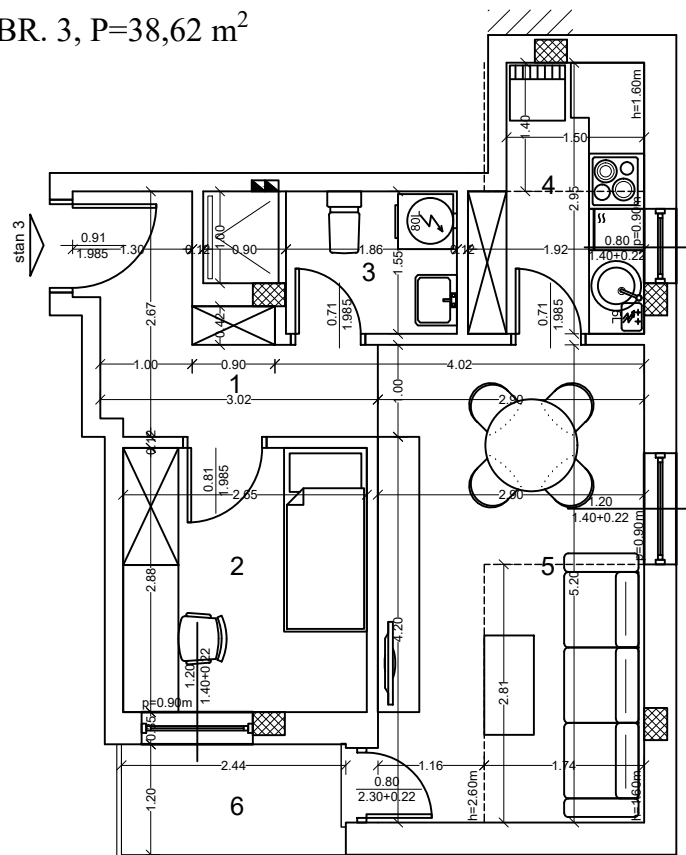


Ulica

KORDUN GRADNJA

STAMBENI OBJEKAT P+1+Pk
 Ulica Slavka Rodića bb, Novi Sad
 K.P. 3835/13, K.O. Veternik

OSNOVA STANA BR. 3, P=38,62 m²

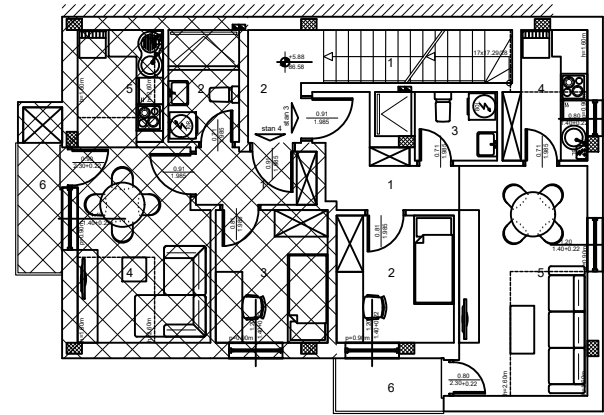


POTKROVLJE- STAN 3

BR.	NAZIV PROSTORIJE:	P [m ²]
1.	Ulaz	5,20
2.	Spavaća soba	7,39
3.	Kupatilo	3,67
4.	Kuhinja	4,92
5.	Dnevna soba i trpezarija	14,60
6.	Balkon	2,84
	UKUPNO:	38,62



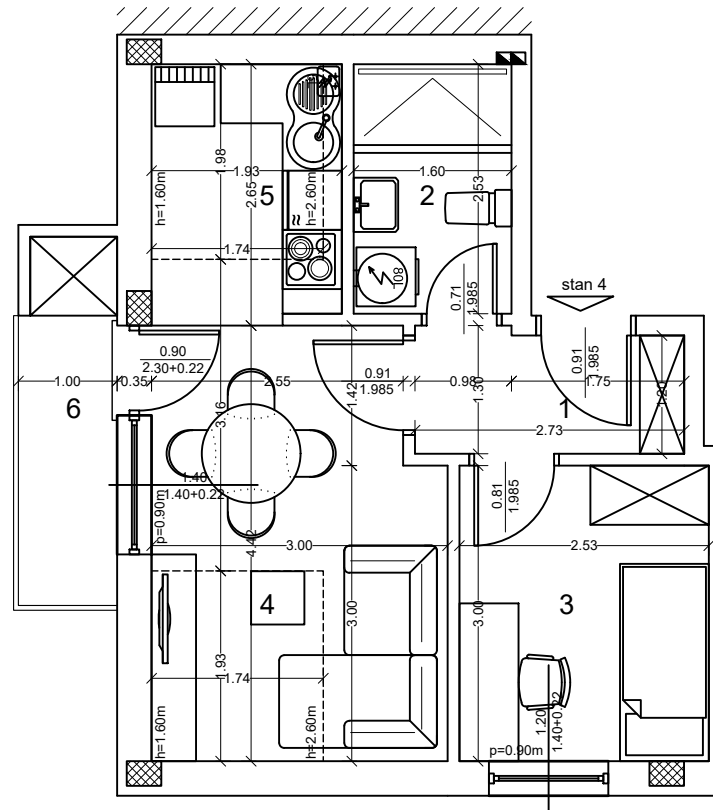
OSNOVA POTKROVLJA / položaj stana u zgradi



KORDUN GRADNJA

STAMBENI OBJEKAT P+1+Pk
 Ulica Slavka Rodića bb, Novi Sad
 K.P. 3835/13, K.O. Veternik

OSNOVA STANA BR. 4, P=35,04 m²



POTKROVLJE - STAN 4

BR.	NAZIV PROSTORIJE:	P [m ²]
1.	Ulaz	3,27
2.	Kupatilo	3,93
3.	Spavaća soba	7,34
4.	Dnevna soba i trpezarija	12,23
5.	Kuhinja	4,73
6.	Balkon	3,53
	UKUPNO:	35,04