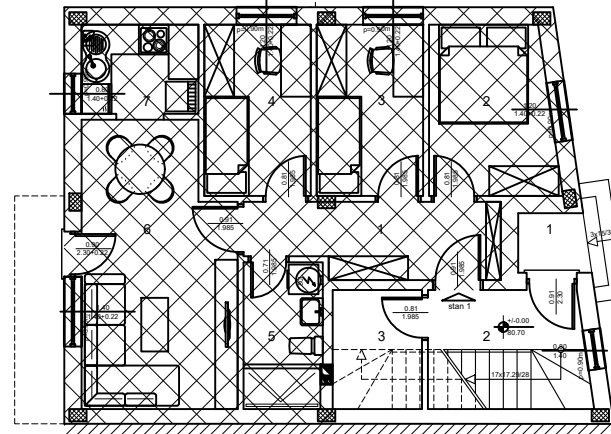




OSNOVA PRIZEMLJA / položaj stana u zgradi

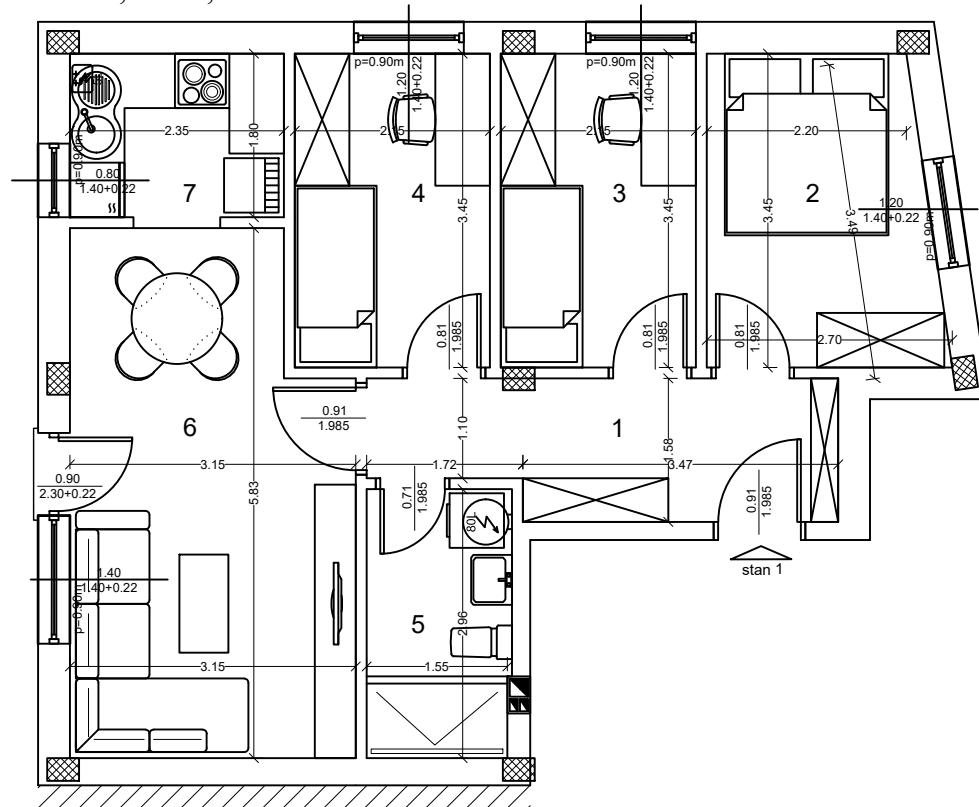
Ulica Slavka Rodića



# KORDUN GRADNJA

STAMBENI OBJEKAT P+1+Pk  
 Ulica Slavka Rodića bb, Novi Sad  
 K.P. 3835/12, K.O. Veternik

OSNOVA STANA BR. 1, P=54,92 m<sup>2</sup>



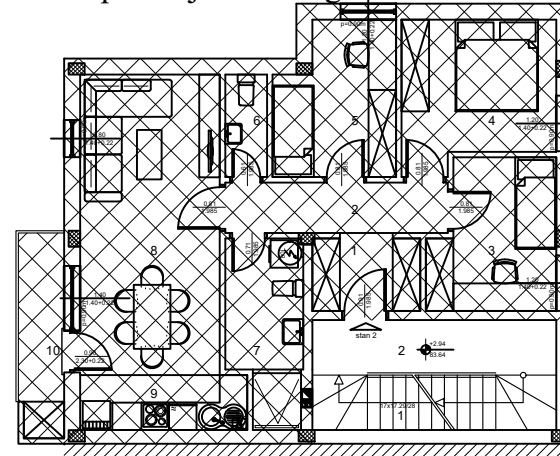
## PRIZEMLJE - STAN 1

BR.	NAZIV PROSTORIJE:	P [m <sup>2</sup> ]
1.	Ulaz	7,12
2.	Spavaća soba	8,21
3.	Spavaća soba	7,20
4.	Spavaća soba	7,20
5.	Kupatilo	4,55
6.	Dnevna soba i trpezarija	16,54
7.	Kuhinja	4,11
	UKUPNO:	54,92



OSNOVA 1. SPRATA / položaj stana u zgradi

Ulica Slavka Rodića



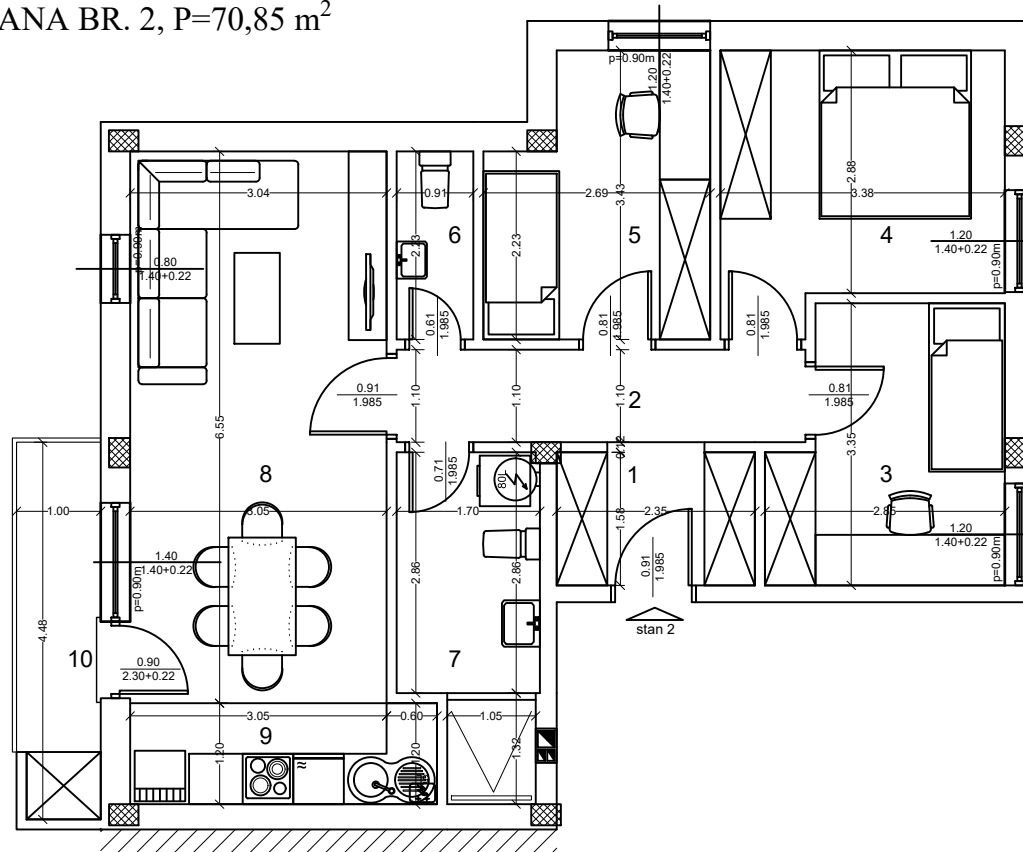
# KORDUN GRADNJA

STAMBENI OBJEKAT P+1+Pk  
 Ulica Slavka Rodića bb, Novi Sad  
 K.P. 3835/12, K.O. Veternik

## 1. SPRAT- STAN 2

BR.	NAZIV PROSTORIJE:	P [m <sup>2</sup> ]
1.	Ulaz	3,61
2.	Hodnik	5,18
3.	Spavaća soba	8,23
4.	Spavaća soba	9,99
5.	Spavaća soba	7,96
6.	Toalet	1,97
7.	Kupatilo	6,06
8.	Dnevna soba i trpezarija	19,36
9.	Kuhinja	4,24
10.	Balkon	4,25
	UKUPNO:	70,85

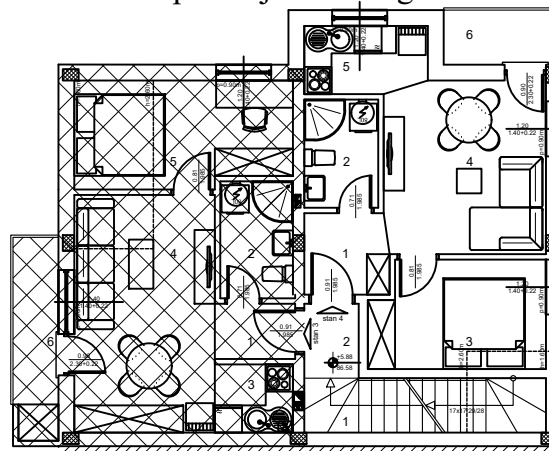
OSNOVA STANA BR. 2, P=70,85 m<sup>2</sup>





OSNOVA POTKROVLJA / položaj stana u zgradi

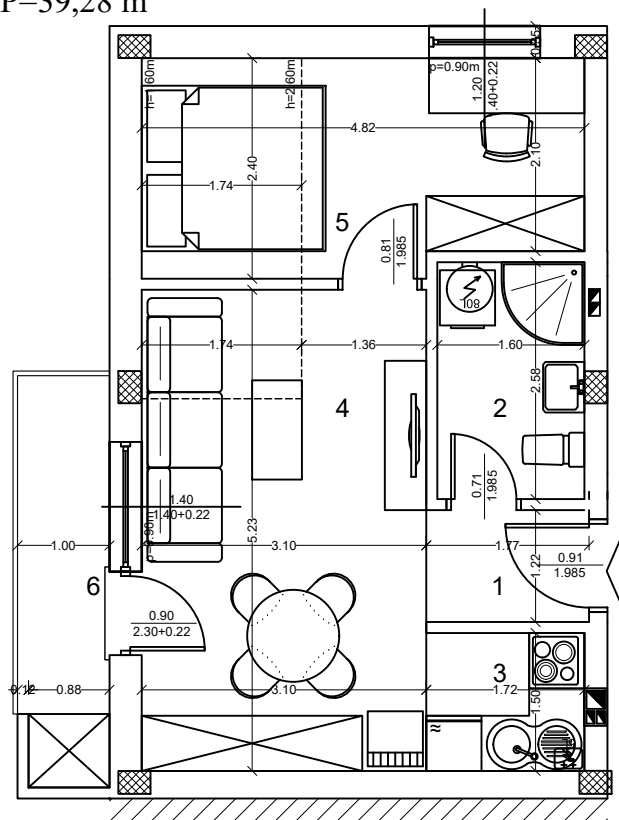
Ulica Slavka Rodića



## KORDUN GRADNJA

STAMBENI OBJEKAT P+1+Pk  
Ulica Slavka Rodića bb, Novi Sad  
K.P. 3835/12, K.O. Veternik

OSNOVA STANA BR. 3, P=39,28 m<sup>2</sup>



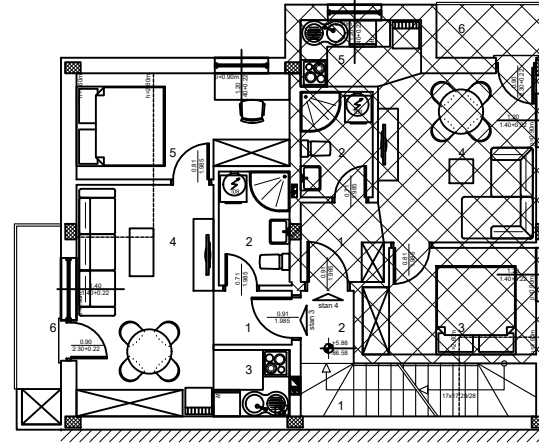
### POTKROVLJE- STAN 3

BR.	NAZIV PROSTORIJE:	P [m <sup>2</sup> ]
1.	Ulaz	2,10
2.	Kupatilo	4,00
3.	Kuhinja	2,50
4.	Dnevna soba i trpezarija	15,72
5.	Spavaća soba	10,71
6.	Balkon	4,25
	UKUPNO:	39,28



## OSNOVA POTKROVLJA / položaj stana u zgradi

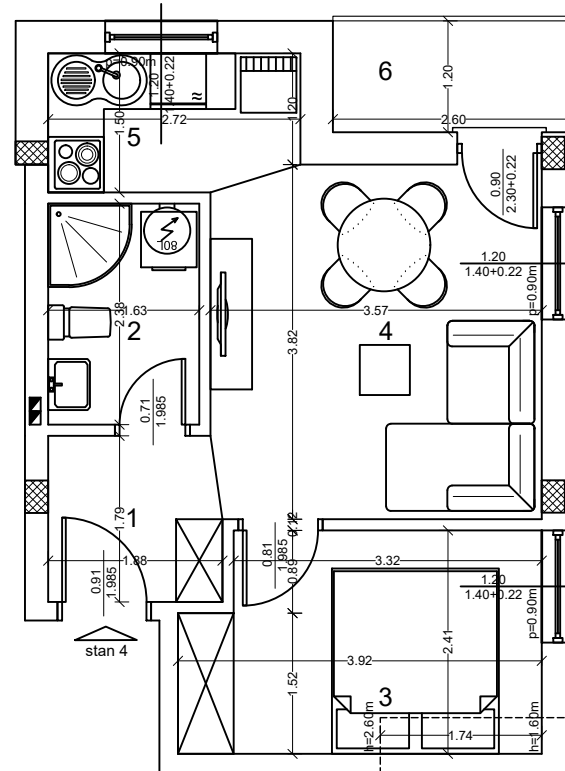
Ulica Slavka Rodića



# KORDUN GRADNJA

STAMBENI OBJEKAT P+1+Pk  
 Ulica Slavka Rodića bb, Novi Sad  
 K.P. 3835/12, K.O. Veternik

## OSNOVA STANA BR. 4, P=35,53 m<sup>2</sup>



## POTKROVLJE - STAN 4

BR.	NAZIV PROSTORIJE:	P [m <sup>2</sup> ]
1.	Ulaz	3,21
2.	Kupatilo	3,77
3.	Spavaća soba	8,65
4.	Dnevna soba i trpezarija	13,06
5.	Kuhinja	3,81
6.	Terasa	3,03
	UKUPNO:	35,53